



Installation Instructions

Bamboo Floating Style Lock System



Installation Guide

Please read this guide carefully to ensure the installation of your floor is to an appropriate standard. For compliance to our comprehensive warranty provisions these steps and important tips should be followed to ensure a satisfactory floor installation. If assistance is required, please consult with your reseller or professional installer.

Important

It is considered the sole responsibility of the installer/owner to determine if the job site's sub-floor and environmental conditions are suitable for the installation of Style flooring and accessories.

Final inspection of the flooring is the responsibility of the installer/owner. Any defects in the product should be notified in writing to the point of purchase reseller of the flooring before installation. Once the floor has been installed it is deemed to have been accepted by the purchaser.

Prior to installation carefully examine the flooring for:

- Grade
- Colour and profile, note; all natural products will display colour variation and texture
- Finish and quality
- Straightness and warping
- Ensure there is adequate lighting for a proper inspection
- Any suspect or obvious out of grade products should be reported to your reseller immediately for assessment

Pre-installation notes

- Flooring should be one of the last items installed for all commercial or domestic applications. It is expected that all plaster and painting work should be completed prior to installation.
- All work involving water, e.g. plumbing in kitchen, laundry and bathroom, should be completed before bamboo flooring installation to avoid unnecessary spillage.
- Trade education on-site is required to alert associated trades that the product being installed is pre-finished and care is required to avoid unnecessary damage to surface coatings, etc.
- Do not store bamboo (loose boards) long term directly on concrete or near outside walls.
- Style Lock Flooring is not recommended for bathroom, laundry or wet areas.
- During installation, all bamboo cuts (sides or ends) must be sealed with a good quality sealing oil. Take special precautions and seal sides and ends near bathrooms and laundry door, kitchen appliances, windows and entries that could be subject to water ingress.
- Surface damage or water ingress during and after installation will not be covered by warranty.

For high temperature and high humidity regions including coastal zones

- Special care should be taken to provide adequate acclimatization of the flooring planks prior to installation. It is recommended that the planks should be removed from the packaging and stored in the area they are to be installed in for a minimum of 5 days to allow for acclimatization.
- In these types of environments, expansion and contraction are common and the planks need to achieve some form of balance prior to installation. Methods of installation that accommodate for these types of changes are recommended in the regions with humidity levels higher than 60%.
- **Note:** Housing locations situated on elevated sites with open sub-floor spaces require special precautions. In such locations, very dry winds or wind blown rain and fog can result in very extreme changes to the lower surface area of the floor. Extreme shrinkage or swelling may result. Protection to the underside of the floor is required.



Jacobsen Limited

Auckland
228 Orakei Rd, Remuera
Ph 09-522 5560

www.jacobsens.co.nz

Wellington
Level 1, 23 Marion St, Te Aro
Ph 04-495 4300

Christchurch
Unit 2, 60 Durham St Sth, Sydenham
Ph 03-366 4153



Installation Instructions

Bamboo Floating Style Lock System



General Installation

Style Lock Flooring uses an ingenious patented form of tongue and groove to 'click' the planks together. The Uniclic system requires no glue or nails; Style Lock Flooring is much easier and cleaner to work with providing fuss free and easy installation. An installation video can be viewed by clicking <http://www.uniclic.com.au/en/technology/index.asp?p=glue-less-clic-installation>. The installation section will help guide you through the techniques required for your project.

Installation Tips

- Inspect each board for defects and grade for use.
- Stack into colour range (light, medium, dark) for blending.
- Do not use Style Lock in damp or wet areas.
- Do not install cabinets or walls on top of the floating floor.
- Do not attempt to knock the Style Lock Flooring Joint into place with one hit. Be sure to tap off all joins, even if the plank appears to be in place.
- Tapping Block should be used; otherwise you may damage the plank.
- Do not install defective planks and make sure to check each plank prior to installation.
- For room widths greater than 6 metres, further expansion provisions will be necessary. Please refer back to guidelines from the point of purchase reseller.
- For new construction allowing the floor to float under the plaster walls is advantageous. This practice enables the floor to have more space to cater for natural expansion and contraction. Skirting should be fixed after installation.

Recommended Tools

Hammer (1lb/500g), tapping block (tested to ensure it won't damage the planks), tape measure, spacer blocks/wedges (12-15mm), saw, crowbar or pinch bar with protruding edge (to be tapped on with a hammer).

When sawing pieces off the planks, use a fine-toothed hand saw, jigsaw or cross-cut saw. To achieve a clean cut, saw with the face side down with a jigsaw, face side up with a hand saw or cross-cut saw.

The Best Preparation

The floor should preferably be installed parallel to the way the light falls. The ideal environment is a temperature of 15°-20° Celsius and relative humidity of 50%-60%. If installing in higher temperature or humidity zones, please refer to earlier note. Allow Style Lock Flooring to acclimatize for 48 hours in its original packing, in the area where it is to be installed. Place the packs in the middle of the room, NEVER against a wall or place in a corner. Check that:-

- Doors can still open and close after installing the floor with a sub-floor (minimum of 10mm)
- Door frames may need to be adapted to install the floor under them
- Old plinths/skirting can be removed.

Sub-Floors

The sub-floor must be thoroughly clean and flat before Style Lock Flooring can be installed on it. Flatten any unevenness of more than 5mm over a 3m radius. Suitable sub-floors may include concrete, particle board, wood floors and both ceramic and vinyl tiles, among others. Please consult with your professional flooring installer or supplier to determine suitability of sub-floor surface.

Concrete (New Construction)

- The relative humidity of the concrete must be 70% or less using a hygrometer.
- Apply 1-2 coats of a suitable moisture barrier, such as Selleys VBS or Sika MB, over the entire subfloor. Refer to manufacturer's instructions for best results.



Jacobsen Limited
Auckland
228 Orakei Rd, Remuera
Ph 09-522 5560

www.jacobsens.co.nz
Wellington
Level 1, 23 Marion St, Te Aro
Ph 04-495 4300

Christchurch
Unit 2, 60 Durham St Sth, Sydenham
Ph 03-366 4153



Installation Instructions

Bamboo Floating Style Lock System



Concrete (Renovated Constructions)

- In the case of sheet vinyl flooring, i.e. linoleum etc, Style Lock Flooring may be installed on the existing floor covering.
- Note: Regardless of existing flooring, sub-floor requirements still apply.

Wooden Floor

- Style Lock Flooring may be installed over existing floor coverings such as full spread sheet vinyl, however it must be properly bonded with no loose edges or seams.
- The wooden floor must be sufficiently stable. Any loose parts must be nailed down and, if necessary, a level underfloor must be installed.
- The moisture content of the wood may not exceed 10%.
- It is essential that the crawl space under the wooden floor be sufficiently ventilated (minimum 15mm total ventilation opening per square metre of floor).
- Be sure to install new planks across the planks in a cross-hatch fashion.

Installation

Because the humidity of the room can vary due to differences between the seasons for example, the floor must be able to expand in all directions. This expansion can amount to 10mm per metre, so the greater the surface area, the greater the room for expansion required. The floor must be able to expand or contract on all sides. To facilitate this, an expansion gap of 12-15mm should be provided at walls. Dependent on skirting thickness the more space the better. For room widths greater than 6.0m in width and 12m in length, further expansion joints will be required. Please consult with your professional installer or supplier about required distance. Door entries etc. provide opportunities for expansion trims to be introduced.

A gap must also be provided around pipes or at thresholds. With large surface areas, a wider gap must be provided, for example under a double wall. Take into account the fact that the floor may move in one direction. Where possible, provide expansion gaps, i.e. under doors. These gaps are covered by a profile that is not fixed to the flooring but to the base floor.

How to use the locking system:

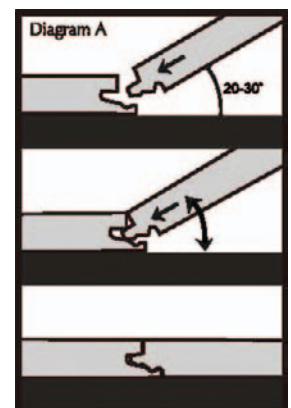
You can join together the planks of the Style Lock Flooring System in two different ways:

- 1 The planks can be rotated to fit into one another with either the tongue into the groove, or the groove into the tongue. The easiest way to fit the Style Lock Flooring is tongue into groove.

Installation instructions are based on using as much as possible of this last installation technique. Fitting the groove onto the tongue is only required in a few specific situations.

Position the plank to be installed at an angle of 20-30° to the plank already installed (Diagram A). Move the plank to be fitted slightly up and down at the same time exerting forward pressure. The planks will then click into place together.

- 2 In some cases, the planks cannot be rotated into one another, for example along the short edge of a plank that has already been clicked into place along the long side, or under a door frame etc. In this case, the planks can also be fitted lying flat.



You should not attempt to knock the Style Lock Flooring Joint into place with one hit. For the short edge, use a number of smaller taps until the planks click together completely.

For the long edge you should tap them together gradually; begin tapping lightly at the corner of a plank until the joint is made, then repeat the process some 300mm along until the entire long edge of the plank has clicked in with the other.



Jacobsen Limited
Auckland
228 Orakei Rd, Remuera
Ph 09-522 5560

www.jacobsens.co.nz
Wellington
Level 1, 23 Marion St, Te Aro
Ph 04-495 4300

Christchurch
Unit 2, 60 Durham St Sth, Sydenham
Ph 03-366 4153



Installation Instructions

Bamboo Floating Style Lock System



Step by Step Installation

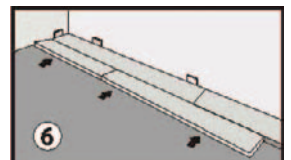
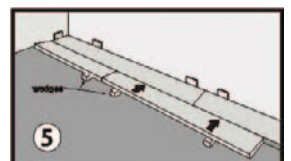
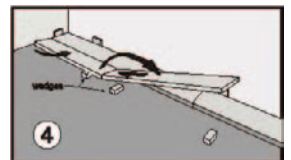
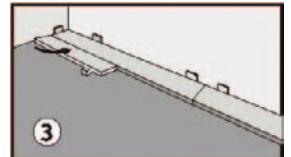
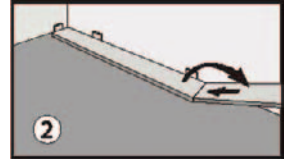
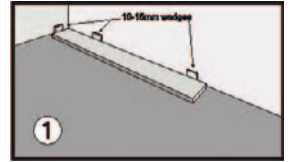
First Row: Start in a corner of the room with the locking strip (groove end) facing the room (see picture #1). To ensure a perfect expansion joint, the tongues along the long edge which go against the wall should be sawn off. Using wedges as required, maintain a 12-15mm gap between the wall and the planks being installed. Install the first plank. Install the second plank (see picture #2), pressing the end of the second floorboard in at an angle to the first one and then laying it down flat on the ground to engage the locking mechanism. Continue with this method until you are ready to install the last plank of the first row. Cut the last plank of the first row to size using a saw then install as done for the previous planks, leaving a 12-15mm gap at the end. After the first row is complete, ensure that all edges are even and parallel. Note: It is practical to fine-tune the gap between the long sides and the wall later, after the first three rows have been laid.

Second Row: Start the second row beginning with (if available) the piece left over (cut off) from the first row (piece must be at least 50cm in length). If the piece is too short, or if there is no leftover piece, start with a new board, cut in half. Always ensure that the end of plank and the wall, insert the long edge of the plank into the adjacent plank of the first row (see picture #3). Push forward and press down at the same time to fully engage the locking mechanism. With the plank resting flat on the floor, ensure there is no gapping on any of the joints. Next, lift the end of the plank and rest it on an installation wedge so that it is not lying flat on the floor (see picture #3). Insert the end of the next plank (see picture #4) into the end of the previously installed plank, lowering the plank until it is parallel to the ground with the long edge of the plank resting on the edge of the first row's locking mechanism. Rest the end of this plank on an installation wedge so that the entire edge of the plank is at the same angle as the end of the first plank.

Slowly and evenly push the entire length (the long edge) of the second plank's locking mechanism fully into place using a tapping block (see picture #5). Once completely inserted, remove all wedges and press the entire plank down to lock the plank. Use a hammer and a tapping block to ensure all edges are perfectly mated. Lift up the very end of the newly installed plank and place an installation wedge underneath it in preparation for installation of the next plank. Continue to install the whole row (see picture #6).

When the entire row is completed, remove all wedges and review the row to ensure there is no gapping and that all locking mechanisms are fully engaged (all planks are perfectly flat). Note: Never hammer planks without using a tapping block or damage to plank edges will occur.

Place a weight (e.g. a pack of planks) on the completed boards to stabilise them. Continue this method to install the whole floor. Remember you can use the left-over pieces that you have from the end of each row to begin the next row (minimum 500mm). Always place a weight on the joints that you have just made in order to stabilise them.



Finishing

After installing our floor, you can immediately walk on it and begin the finishing process. This is one of the major benefits of the Style Lock Flooring System.

- Remove all spacer blocks/wedges.
- Fix the skirting boards to the plastic membrane sticking up from the floor. Never fix the skirting boards to the floor itself, but allow the floor to expand and contract underneath the skirting board.
- Finish the pipes with rosettes or silicone.
- In places where no profiles or skirting boards can be placed, the expansion gap must be filled with silicone. Silicone should also be inserted in the expansion at the perimeter where the Style Lock Flooring may be exposed to excess moisture such as against shower stalls, bathtubs, around the toilet base, behind the toilet, in front of dishwashers and sinks.

Installation Around Pipes or Columns

Drill holes and saw out flooring as required to make room for any exposed structure or pipe. Note: Holes around pipes or other items must be at least 20mm greater in diameter than the pipe or structure.



Jacobsen Limited
Auckland
228 Orakei Rd, Remuera
Ph 09-522 5560

www.jacobsens.co.nz
Wellington
Level 1, 23 Marion St, Te Aro
Ph 04-495 4300

Christchurch
Unit 2, 60 Durham St Sth, Sydenham
Ph 03-366 4153



Installation Instructions

Bamboo Floating Style Lock System



Step by Step Installation continued

Radiant Heating Systems

Style Flooring products are suitable for installation over most radiant heating systems provided the surface temperature of the installed flooring never exceeds 24° Celsius. Please note the existing underfloor systems need to be checked and approved by fitter as tile/carpet or other systems can damage a floor due to uneven heating or higher temperatures. The system regulator needs to be fitted into the substrate rather than an ambient gauge.

Because the radiant heating systems create 'dry' heat, it is essential that the relative humidity in the installation environment be maintained between 35%-55%. Also, the maximum difference in moisture content between the sub-floor and the flooring material must never exceed 4%.

The owner/installer assumes sole responsibility for ensuring the job site has environmental conditions/controls suitable to the installation of Style Flooring over the chosen radiant heating system.

The radiant heating system shall be in operation for at least 7 days prior to installation, shut off 4 hours prior to installation and then returned to operation once installation is complete. Please refer to www.radiantpanelassociation.org for further information.

Precautions

- Never steam mop or wet mop floor surface area after installation.
- Protect furniture and chair feet with felt or plastic caps.
- Avoid bringing dirt, water and sand from outside by use of a doormat.
- Make sure there is a minimum humidity of 35%-50% in the room, if necessary use a humidifier.
- Keep nails trimmed on animals.
- Periodically rearrange rugs and furniture to allow for even ageing of the flooring.
- Use area rugs in high traffic areas.

Maintenance

- With its smooth surface, Style Lock Flooring cannot retain dust or dirt.
- Style recommends vacuuming or sweeping in order to remove dirt and grit prior to cleaning the flooring.
- Never use wax, oil, soap or other household cleaners.
- For dry maintenance, wipe over with clean water or with wood floor cleaner. This product cleans the floor very well and leaves a satin shine. Only use a well wrung out cloth. Always wipe dry immediately after until no moisture is visible.
- Never use scouring products.
- Despite the superior moisture resistance of Style Lock Flooring remove any excess water immediately.

Product Warranty

Structural Warranty

1. Style Limited warrants the product in the original manufactured state free from structural defects for 20 years in residential applications and 10 years for use in commercial applications from the date of purchase.
2. Style Limited will replace defective products only. This warranty excludes all other costs associated with installation of the product.

Finish Wear Layer Warranty

1. Style Limited warrants to the original purchaser that the surface finish wear layer of aluminium oxide will not peel or separate from the flooring plank for 10 years residential use and 5 years in commercial use from the date of purchase.
2. This warranty covers normal residential traffic, provided that all preventative maintenance and care operations are maintained.
3. Style Limited and the recommended adhesive companies will only warrant floating, glue down or direct stick installations with the recommended adhesive series.

For full Warranty details including exclusions and claims procedures, please refer to your reseller.



Jacobsen Limited
Auckland
228 Orakei Rd, Remuera
Ph 09-522 5560

www.jacobsens.co.nz
Wellington
Level 1, 23 Marion St, Te Aro
Ph 04-495 4300

Christchurch
Unit 2, 60 Durham St Sth, Sydenham
Ph 03-366 4153